

SC90® TREX® PLATFORM

The SC90® Trex® Platform is just like all other Staging Concepts SC90 platforms, except the platform insert is manufactured by our parent company, Trex® Decking. Its strength and durability aligns with the top quality products you've come to learn and trust from Staging Concepts. More specifically, the SC90 Trex Platform features the Enhance® Composite Decking which is made from recycled materials, such as sawdust, plastic packaging, and reclaimed wood. This composite provides the appearance of a clean, wood finish without the maintenance. For instance, this platform is resistant to fade, stain, mold, and mildew, and can easily be cleaned with soap and water. The standard 4' x 8' deck can hold up to 150 lbs. per square foot. Multiple decks can be locked together with the same Roto-Locks used in all other Staging Concepts' SC90 platforms.

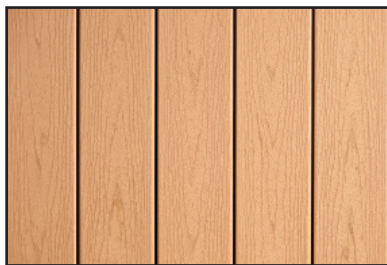


ABOUT TREX® ENHANCE

Trex® Enhance is a low-maintenance, high-performance composite that offers all the charm and none of the trouble of real wood. With its high-definition grain pattern and classic color options, Enhance features a rich, sophisticated finish at a value that only adds to its appeal.

AVAILABLE COLORS

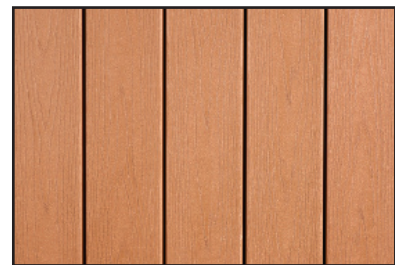
More colors available upon request.



BEACH DUNE



CLAM SHELL



SADDLE



SC90® TREX® PLATFORM

ADVANTAGES

Strength

- Constructed of recycled wood, plastic, and sawdust
- Engineered to support 150 lbs/square foot
- Top locking Roto-Locks provide monolithic floor when platforms are locked together

Durability & Efficiency

- Low-maintenance, high performance deck is resistant to fade, stain, mold, and mildew
- Compatible with all Trex Railing

Convenience

- Easily clean with soap and water or a pressure washer
- Soft, splinter-free finish
- Features Trex Hideaway® Hidden Fasteners so there are no visible screws on top

Variety

- Multiple surface options available: Beach Dune, Clam Shell, and Saddle (More colors available upon request)
- Made of recycled wood, plastic, and sawdust
- Decking can run either the long way or the short way of the platform

TECHNICAL SPECIFICATIONS

The SC90 Trex Platform is a single side, outdoor, weather-resistant, portable platform.

Platform is designed to be fully field repairable, to function with all Staging Concepts' supports, and to comply with the following:

- Edging: 4" (101.6 mm) high, extruded 6005A-T61 aluminum frame, including protective edge, mill finish. Design frame to accept:
 - Built in Roto-Lock system
 - Structural locking clip system guardrail
 - Chair stops
 - Closure panels
 - Step units
 - Skirting clips

DIMENSIONS, WEIGHTS, AND FINISH OPTIONS

4' x 8' (1.22 m x 2.44 m) (lbs/kg)

| | |
|---------------------|-----------|
| 3 Beams (Long Way) | 259/117.5 |
| 5 Beams (Short Way) | 237/107.5 |

4' x 6' (1.22 m x 1.83 m) (lbs/kg)

| | |
|---------------------|----------|
| 3 Beams (Long Way) | 205/92.9 |
| 4 Beams (Short Way) | 190/86.2 |

4' x 4' (1.22 m x 1.22 m) (lbs/kg)

| | |
|---------|----------|
| 2 Beams | 130/58.9 |
|---------|----------|

3' x 8' (0.92 m x 2.44 m) (lbs/kg)

| | |
|---------------------|----------|
| 2 Beams (Long Way) | 189/85.7 |
| 5 Beams (Short Way) | 194/87.9 |

3' x 6' (0.92 m x 1.83 m) (lbs/kg)

| | |
|---------------------|----------|
| 2 Beams (Long Way) | 142/64.4 |
| 4 Beams (Short Way) | 157/71.2 |

3' x 4' (0.92 m x 1.22 m) (lbs/kg)

| | |
|---------|---------|
| 2 Beams | 98/44.5 |
|---------|---------|

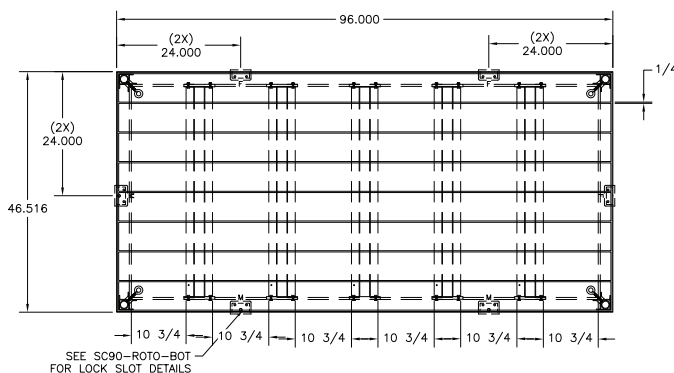
3' x 3' (0.92 m x 0.92 m) (lbs/kg)

| | |
|--------|-----------|
| 1 Beam | 72.3/32.8 |
|--------|-----------|

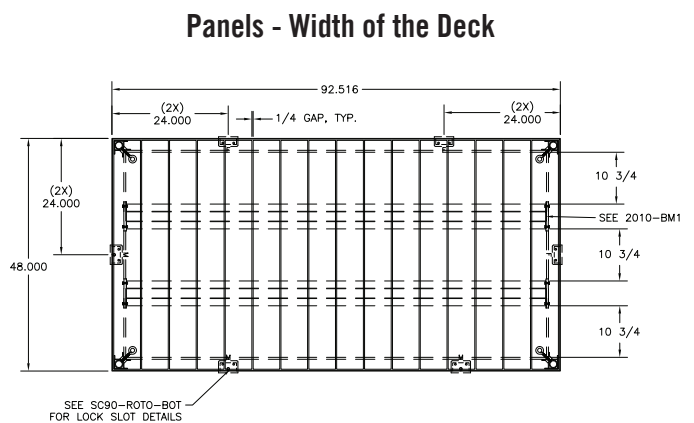
Aluminum Frame Options:

Mill finish; Powder coat finish (black or silver); Anodized finish (black or clear)

SC90 TREX PLATFORM SCHEMATICS



Panels - Length of the Deck



Panels - Width of the Deck